

Tiger Offshore ROV System



Tiger ROV System – 1000m depth rated

Our Tiger ROV (remotely operated vehicle) is configured to be a compact free swimming offshore ROV system and comes complete with A60 Zone 2 control container and A60 Zone 2 gravity based crane LARS (launch & recovery system). The ROV is ideal for close and general visual inspections of client subsea assets, offering a complete survey package from high pressure water jetting to FMD surveys.



9Kw 120 Bar HP Water jet –
Optionally fitted to the Tiger
ROV

Specifications of the Tiger ROV

- Maximum operating depth: 1000 metres
- Dual video channels
- Saab Seaeye Colour camera (Tritech Typhoon colour zoom & focus camera - optional)
- Saab Seaeye low light Monochrome camera
- 32 Kg (70 lb) payload
- 4 Vectored and one vertical Seaeye SM4M thrusters with velocity feedback
- Tritech Super Seaking DST Sonar
- 300 watts of variable intensity LED lighting positioned on the camera tilt platform
- Integral video overlay
- Zone 2 Control Container
- Zone 2 Gravity based crane mounted Launch and Recovery System (LARS)

Optional Tooling packages

- 9Kw 120bar HP water jetting cleaning system
- Contact or Proximity CP
- Pipe / cable tracking system
- Cygnus Ultra thickness measurements
- Mechanical cleaning
- Scaling cameras
- 660Vac 3 Phase power outlet option
- Single or 5 function manipulator option
- Flooded Member Detection

Size, Weight and Thrust

- Length 1030 mm
- Height 590 mm
- 800 mm (with tooling skid)
- Width 700 mm
- Thrust Fwd 62 kg
- Thrust Lateral 43 kg
- Thrust Vertical 22 kg
- Weight 150 kg
- Payload 32 kg

Power requirements

- 3 phase 380 to 480Vac 63amp

**Length 3.9m x Width 2.42m x Height 2.66m - A60 Zone 2 ATEX ROV Control Cabin
BS EN 12079 DNV 2.7-1 standard:**

Weight: 6.3T

Power cable length: 30m

LARS deckleads lengths: 30m

- EX and monitoring equipment
- 380Vac to 460Vac 3 Phase to single phase 7KVA domestic transformer
- 440Vac to 660Vac 9Kw tooling 3 phase transformer for high pressure water jetting system
- 2 x 3 phase 32amp sockets for winch and ROV
- 1 x 3 phase distribution panel
- 1 x single phase distribution panel
- 19" Racking complete with supporting equipment (see below)
- Heating
- Storage cupboards
- Inspection co-ordinators desk complete with monitor
- COSHH cabinet
- System certificates and manual shelf

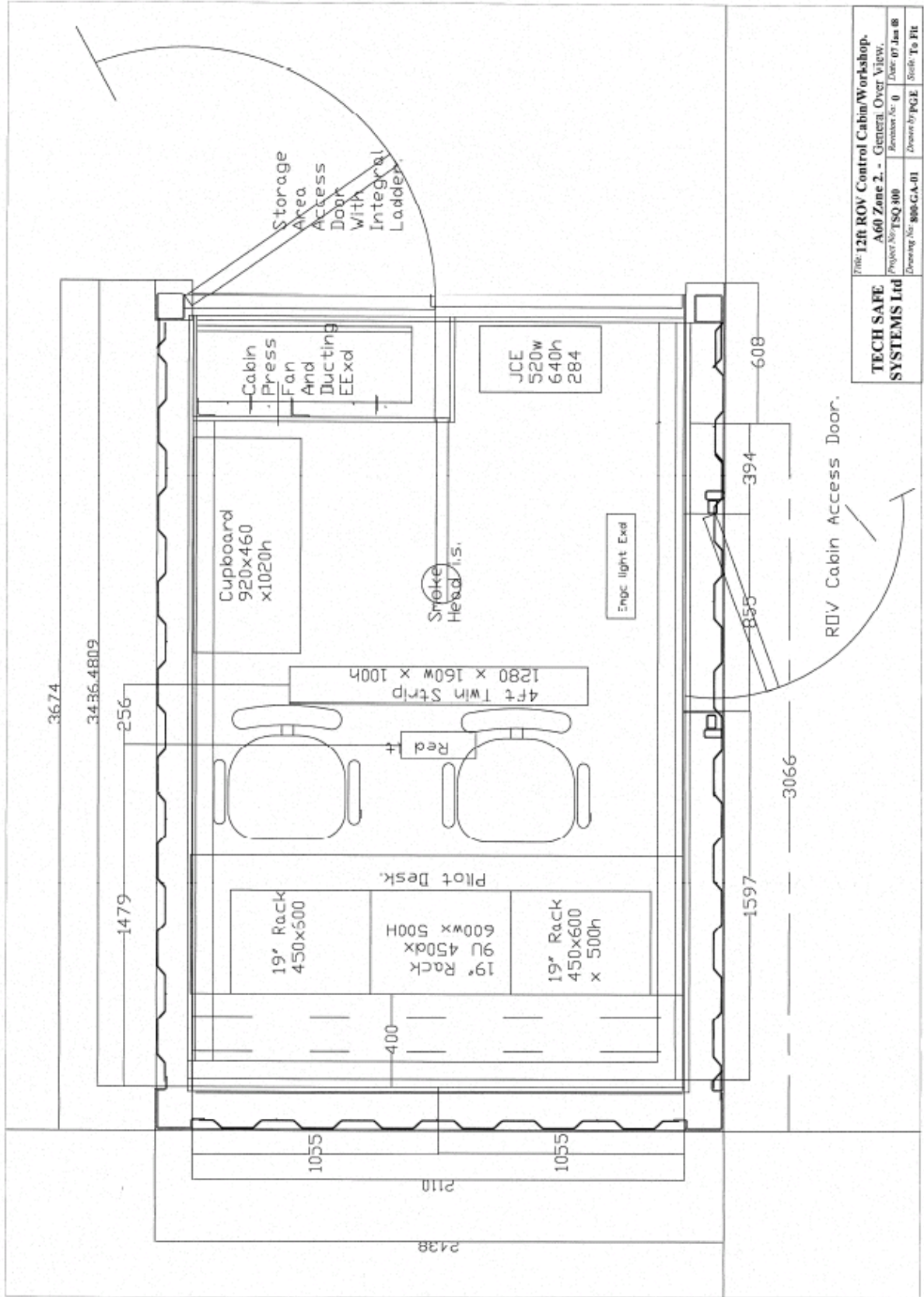
Ancillary equipment fitted within the 19" control racking

- 2 x Pilot Pal monitors
- 1 x Pilot Sonar VGA monitor
- 1 x Pilot diagnostic VGA monitor
- 1 x ROV PSU
- 1 x ROV 10PDU
- 1 x Netmc Marine DVR inspector (interfaces with Scope and Coabis inspection software)
- 1 x Netmc Marine Overlay system
- 1 x Panasonic AG-7350 SVHS recorder
- 2 x Survey Pal monitors
- 1 x Coordinators monitor
- 1 x Canford Communication master station
- 1 x Kramar 4 x 4 switcher
- 1 x Tritech Seanet Scu
- 1 x General PC for paperwork and DVD burning – complete with Pinnacle video editing and Nero Burn software
- 1 x Colour printer



13' Zone 2 ROV Control Container

Internal Layout of the Tiger ROV Control Cabin



Title: 12ft ROV Control Cabin/Workshop.	
A60 Zone 2 - General Over View.	
Project No: TSO 300	Revision: 01
Drawn By: PAGE	Date: 07 Jan 08
Scale: To Fit	
TECH SAFE SYSTEMS Ltd	

Length 2.2m x Width 2.1m x Height 2.2m LARS (Launch and Recovery System)

A60 Zone 2 ATEX:

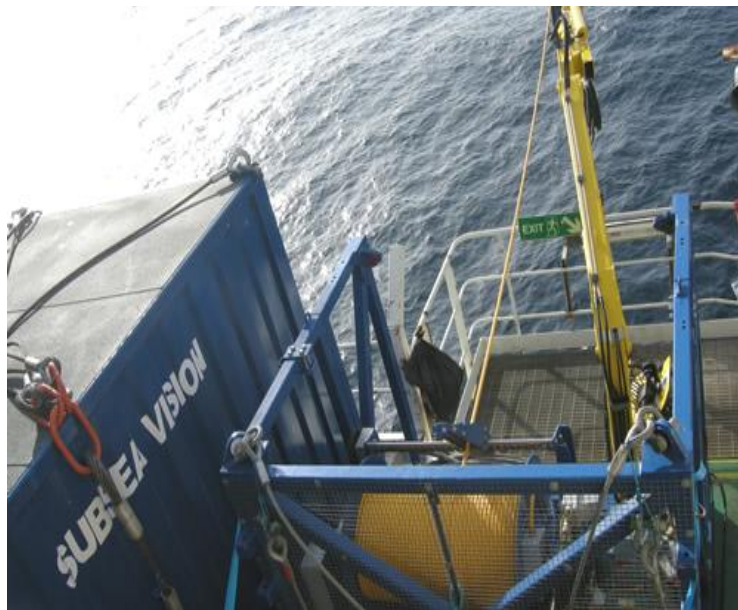
Weight: 4T

Decklead length: 30m

Umbilical length: 400m

- Capacity 400m of umbilical
- Line speed variable 0 – 30m per minute
- Knuckle boom marine crane 5.6 metre outreach
- Electro-hydraulic HPU for winch and crane
- Water ballast tank for gravity based operations
- Sacrificial tie down points
- Gear & Chain driven diamond bar and traveling block for drum spooling
- Sheave wheel complete with lock latch assembly SWL500kg

Tiger LARS



Subsea Vision

Contact details

Unit 35
Glenmore Business Park
Blackhill Rd
Holton Heath
Poole
Dorset
BH16 6NL
United Kingdom

Telephone: +44 (0) 1202 656861

Fax: +44 (0) 1202 624899

Email: enquiries@subseavision.co.uk

Web: www.subseavision.com

